



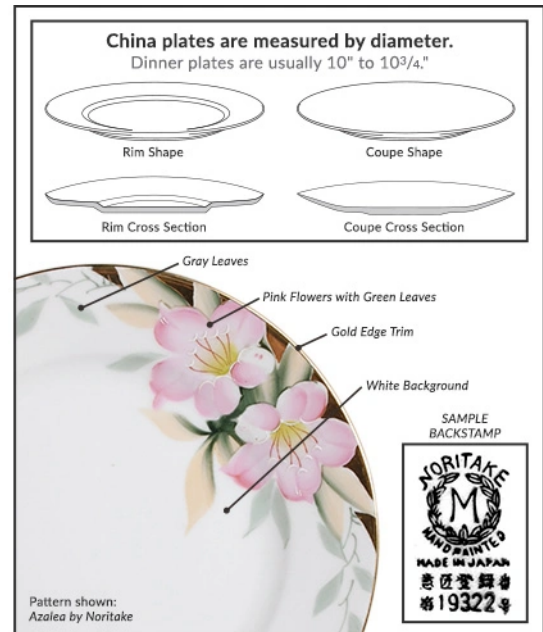
REPLACEMENTS, LTD.
Tableware . Silver . Estate Jewelry

MAILING IN YOUR IDENTIFICATION REQUEST

Our team of researchers are happy to help identify your pattern(s). Follow these step-by-step instructions for each dinnerware category to provide the best information about your pattern.

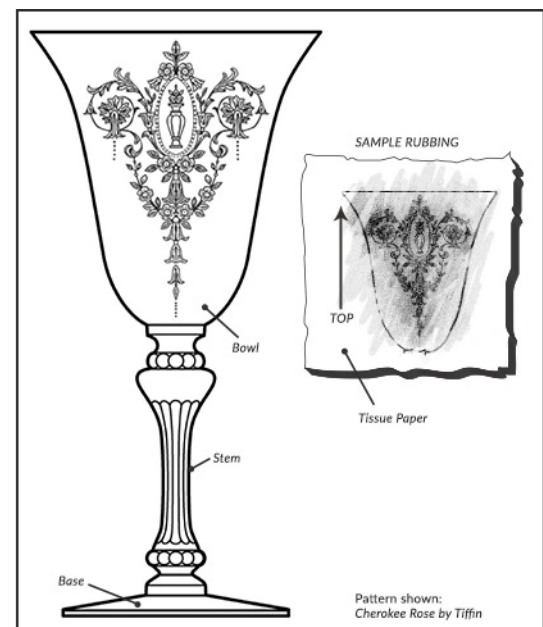
CHINA IDENTIFICATION INSTRUCTIONS

1. Send an image of the front and back of a dinner plate. If you do not have a dinner plate, use another “flat” piece but preferably not a saucer unless it is the only piece you have. Photographs, photocopies, or scans are also acceptable if they are of high quality.
2. Indicate the piece imaged, its size, and whether the plate is “rim” or “coupe” shape (see diagram).
3. If the image is not in color, include notes about colors, markings, and trim on the edge of the plate.
4. If there are markings on the back of the plate, make sure they're clear; if not, please draw a rough sketch and include any writing or numbers that appear on the back.
5. If known, indicate the approximate age.



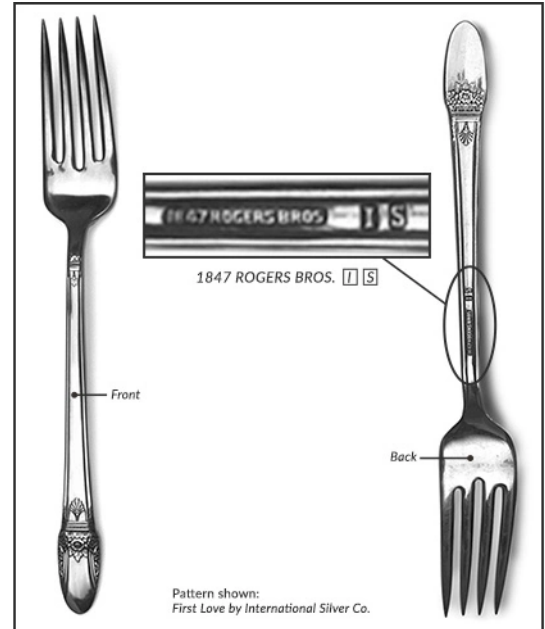
CRYSTAL IDENTIFICATION INSTRUCTIONS

1. Send an image of a stemmed piece, preferably a water goblet (the stem often tells us who made it). Photographs, photocopies, or scans are also acceptable if they are of high quality.
2. Images of drinkware are most clear when taken against a dark background in good lighting.
3. Include height measurement of the piece in inches.
4. If known, indicate the approximate age.
5. When making a **hand-drawn sketch**: for crystal pieces **with cuttings or etchings**, take a piece of lightweight paper (such as tissue paper) and wrap around the bowl of a water goblet. Using the side of a soft leaded pencil, make a rubbing of the design (per the diagram).



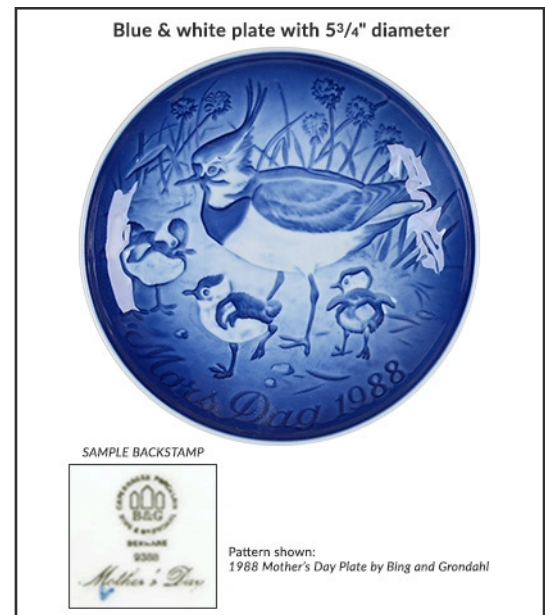
SILVER IDENTIFICATION INSTRUCTIONS

1. Send an image of both the front and back of a fork or spoon. Photographs, photocopies, sketches or scans are also acceptable if they are of high quality.
2. If photocopying silver, please make sure the copier isn't set too dark, it makes the pattern difficult for us to see.
3. Include a close-up image of the trademark and any other information shown on the back of the piece along with a length measurement in inches.
4. If known, indicate the approximate age and product type (stainless, silverplate, or sterling).



COLLECTIBLES IDENTIFICATION INSTRUCTIONS

1. Send an image of the piece and its **backstamp and any symbols, words or numbers**. If these are not clear in the image, provide a description of them in your notes. Photographs, photocopies, sketches or scans are acceptable if they are of high quality.
2. Include a size measurement (height or diameter).
3. Tell us if you have any original boxes and/or certificates that came with the collectible.
4. If known, indicate the approximate age.



Send us your pattern materials, along with your Name, Address, Email Address, and Phone Number to:

U.S. Mail:

Replacements, Ltd.
Attn: Research Department
PO Box 26029
Greensboro, NC 27420

Please allow our research team 3-5 days to respond your request.

If your pattern can be identified, we will create a customer file and add it to your "My Favorites" pattern list. We will also send you a complete pattern listing of the available pieces and their prices. If your pattern cannot be identified, we will notify you.

Identification, Image Usage & Licensing

Replacements, Ltd. gladly makes available to customers and suppliers a service by which product(s) may be identified, free of charge. Additionally, Replacements, Ltd. will evaluate, free of charge, product that is offered for sale. We reserve the right to limit identification of multiple requests to our customers and suppliers. In either case, individuals who so request these services agree to the following terms and conditions related to pictorial images:

Replacements, Ltd. reserves the right, at our sole discretion, to photograph or otherwise produce a pictorial image of any item provided to Replacements, Ltd. for identification, inspection or possible sale. In such case, the owner of such piece shall not receive payment or bear any cost associated with such image production. Replacements, Ltd. shall own all right, title and interest in any such images it produces.

With regard to any pictorial images (of any type or description, including without limitation photographs, drawings and/or digital images) provided to Replacements, Ltd. for identification, the owner grants to Replacements, Ltd., its successors and assigns a non-exclusive, worldwide, paid-up, royalty-free license to reproduce, prepare derivative works, distribute copies, and/or publicly display the image(s).

By submitting any image to Replacements, Ltd., the submitting party agrees that submission does not infringe the right of any third party, including without limitation any third party's copyright, and that such submission is permitted by U.S. law. The submitting party agrees to defend, indemnify, and hold Replacements, Ltd., its shareholders, directors, officers, employees, agents, licensees, sublicensees, successors, and assigns, harmless against all claims, suits, costs, damages, losses, expenses (including court costs, and reasonable attorneys' fees), settlements, and judgments arising out of or related to the submitting party's breach of agreement to these terms or for infringing any third party's rights, including without limitation any third party's copyright.